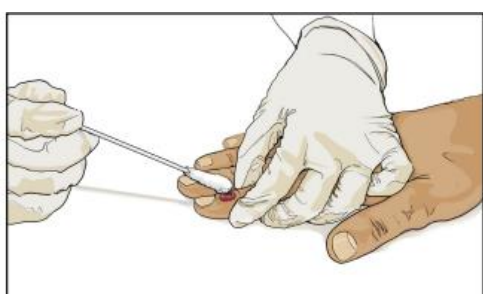


## MPox Instructions for collecting lesion specimens

1. Mpox is a notifiable infectious disease. Health practitioners are required to notify the Medical Officer of Health on suspicion of a case, **prior** to collection of any samples.
2. Wear appropriate personal protective equipment (PPE).
3. If there are multiple lesions, 3 should be sampled. Use separate swabs for each site and please clearly identify the swab site for each sample. Lesions should be vigorously swabbed to collect skin cells that come off the lesion. Because the lesion is deep seated, the lesion does not need to be unroofed for specimen collection.



4. After swabbing of the lesion, place the swab into the tube of VTM and snap it off at the marked break point. Recap the VTM tube, please ensure the lid is securely fitted. If three swabs from three lesions have been taken then they need to go into separate VTM tubes and each sample needs to be clearly labelled to identify the swab.



5. Place the sample into a specimen collection bag for transport to the laboratory, please label with the provided sticker " MPOX samples Do not open". Double-bag the sample into a second specimen collection bag, separate from any other clinical specimens.
6. Ensure clinical information and relevant patient history (eg international travel, contact with known positive patient) is provided on the request form.
7. Send the sample via your usual local laboratory courier network process.